



WATERPROOF



DIGITAL WALL TILES  
Exclusive series

PRODUCT CATALOGUE

Mirrar  
Series  
300 x 450mm





**5501**







**5502**







**5503**



WATERPROOF







**5504**







**5505**







**5506**







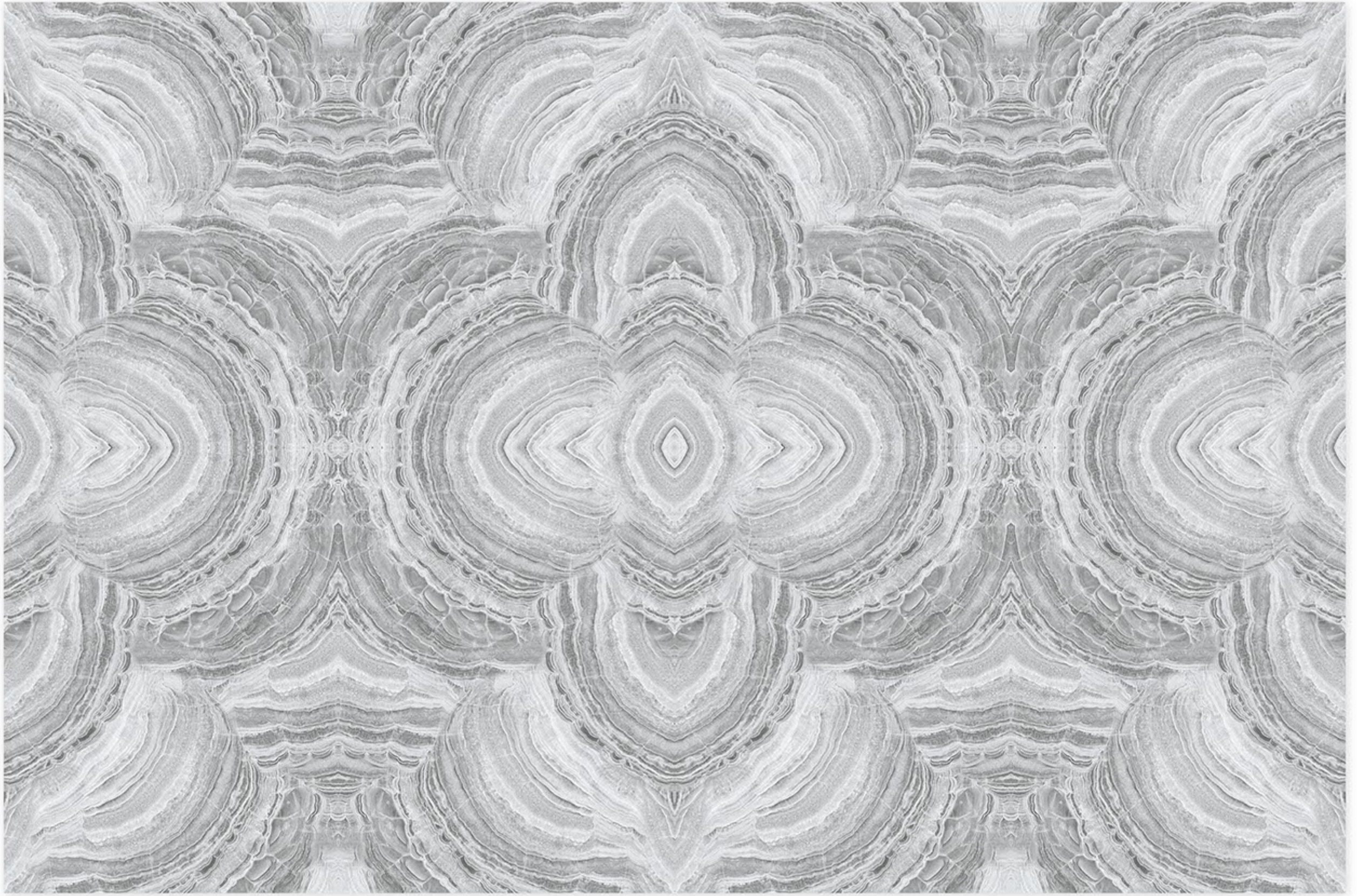
**5507**



WATERPROOF







**5508**



WATERPROOF







**5509**







5510







**5511**



WATERPROOF







**5512**



WATERPROOF



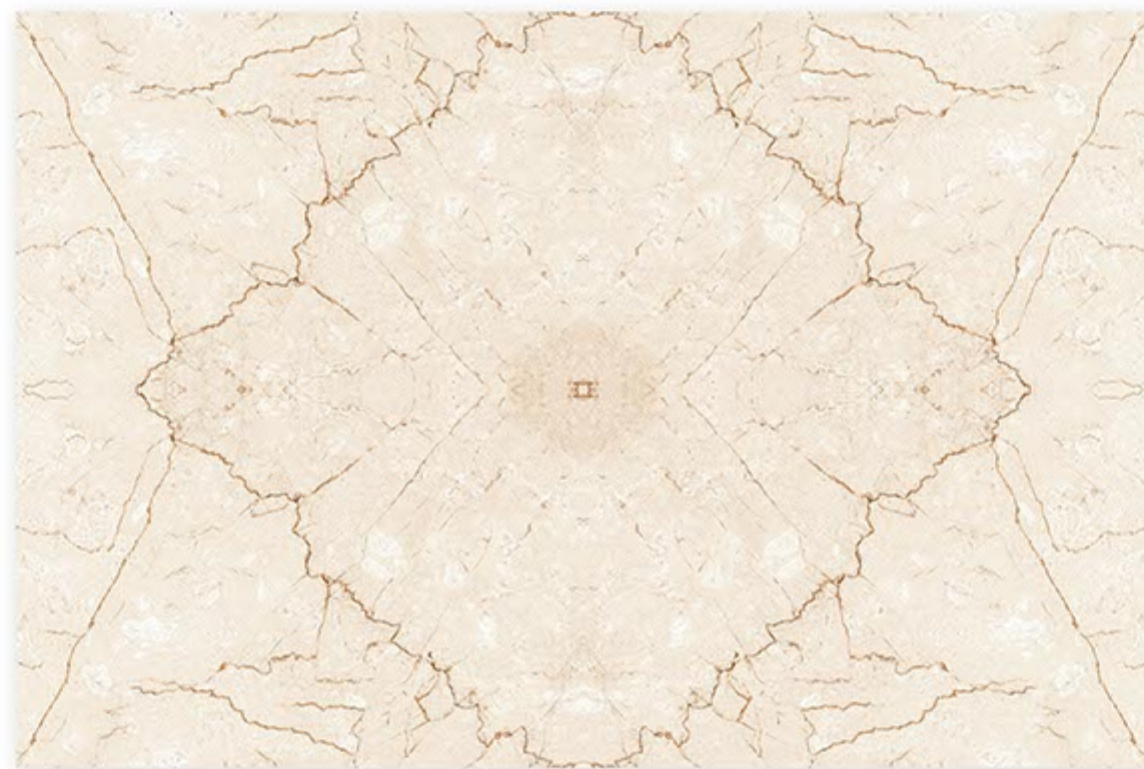
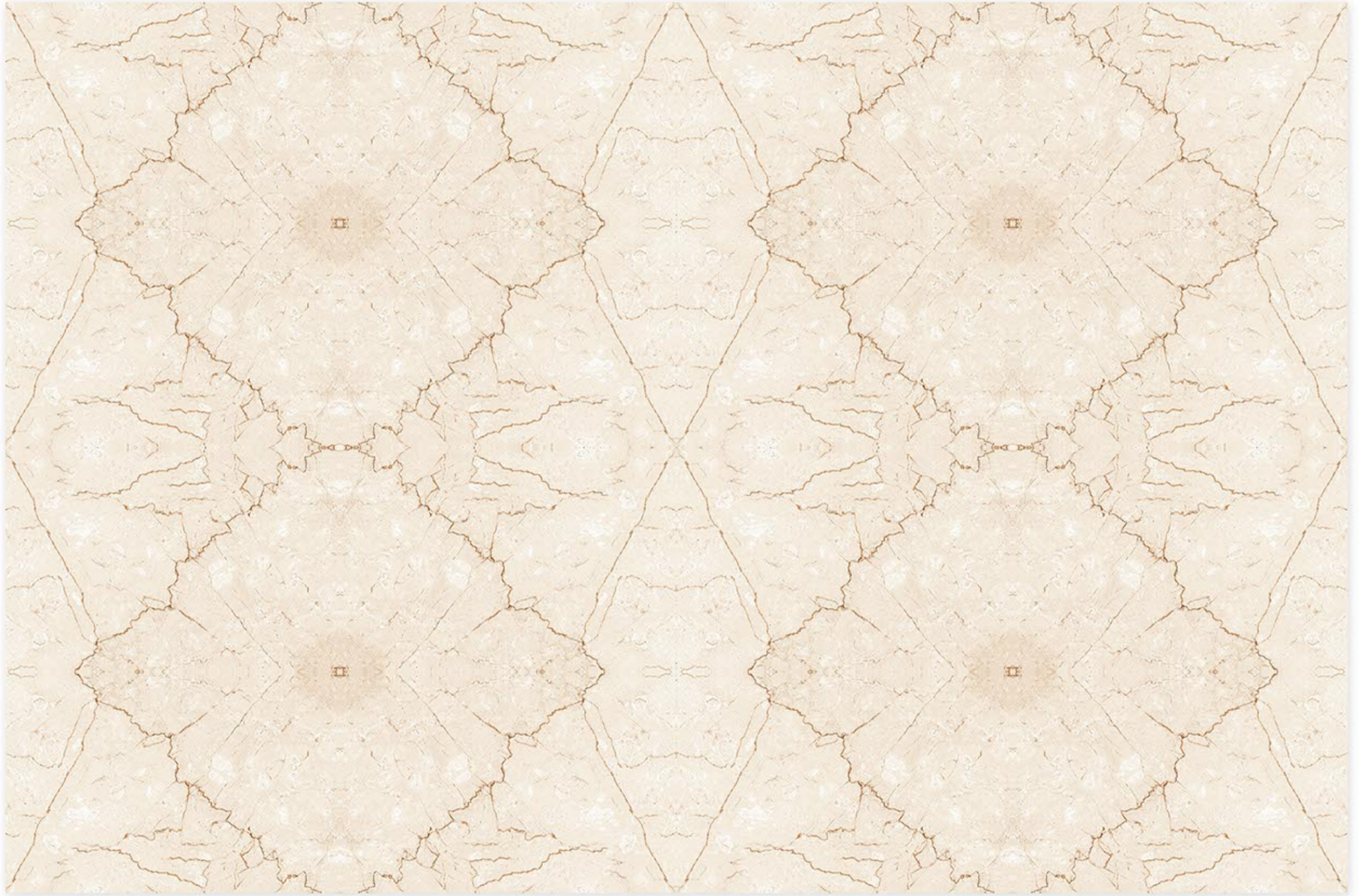




**5513**







**5514**



WATERPROOF







**5515**







**5516**



WATERPROOF







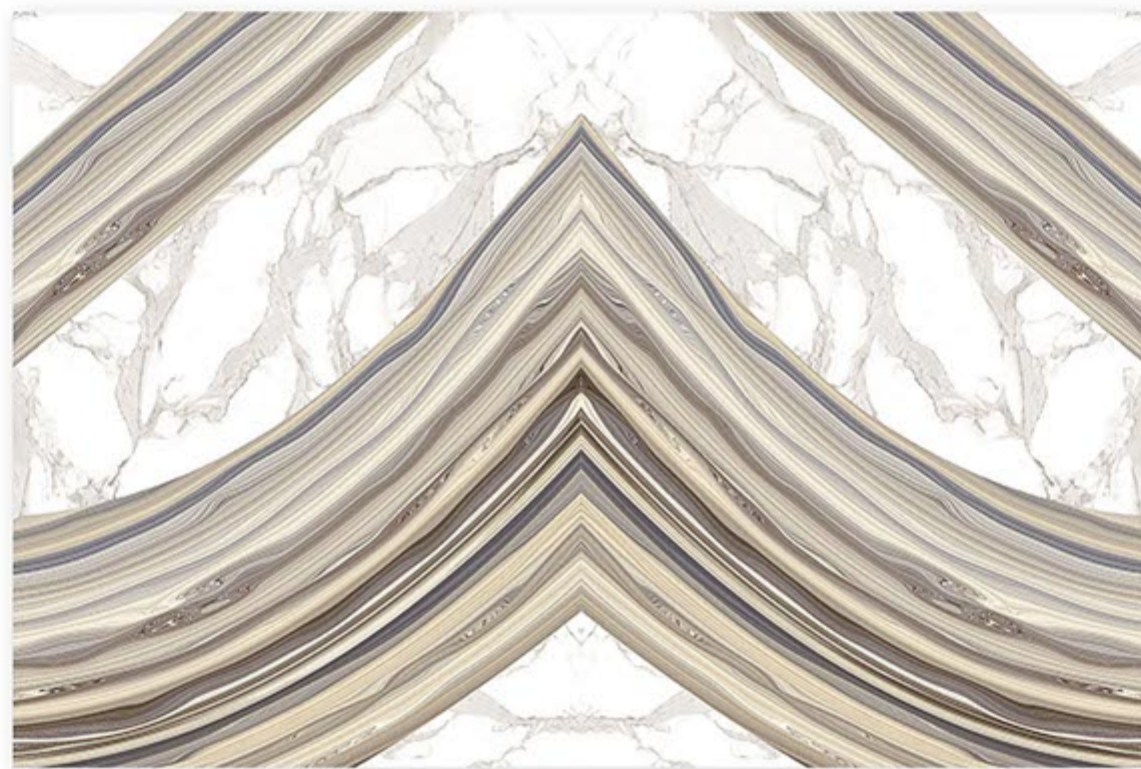
**5517**



WATERPROOF







**5518**



WATERPROOF







# TECHNICAL SPECIFICATION

CHARACTERISTICS	EURO STANDARDS EN - 159/IS 13753	FLORICE VALUES
<b>DIMENSION &amp; SURFACE QUALITY</b>		
1 Dimension & Surface Quality	±0.5%	±0.2%
2 Deviation in Thickness	±0.6mm	±0.2mm
3 Straightness of sides	±0.3%	±0.2%
4 Rectangularity	±0.5%	±0.3%
5 Surface Flatness	±0.5%	±0.3%
6 Surface Quality	Min 95%	Min 96%
<b>PHYSICAL PROPERTIES</b>		
1 Water Absorption	>10%	14.17%
2 Bending Strength	>150 Kg/Cm <sup>2</sup>	200-250 Kg/Cm <sup>2</sup>
3 Scratch hardness (Mohs)	Min 3	Min 3
4 Crazeing	1 Cycle	3 Cycles
<b>CHEMICAL PROPERTIES</b>		
1 Staining Resistance	Min Class 2	Resistance to all Acids and Alkalies & Household Chemicals, except Hydro Flouric Acid
2 Household Chemical	Min Class B	
<b>THERMAL PROPERTIES</b>		
1 Thermal Shock	Resistant to 10 Cycles	CONFORMS
2 Thermal Expansion	Max-9E-06	CONFORMS

## PACKING DETAILS

Size	Thickness (Approx)	No. of Tiles	Area Sq. Mtr.	Weight (Approx)
Wall Tiles - 300x450	8.0(Approx)	6	0.81	11.20 Kgs.
Floor Tiles - 300x300	8.0(Approx)	9	0.81	11.20 Kgs.

## FLORICE CERAMIC LLP

Survey No. 507/2, B/h. admin Vitrified,  
At. Bela (Ranpar) Jetpar Road, Morbi - 363642 (Guj.) INDIA

e-mail : [floriceceramic@gmail.com](mailto:floriceceramic@gmail.com)

Web. [www.floriceceramic.com](http://www.floriceceramic.com)

Call : +91 95120 23201 / 202 / 203